

# NPSP: Customize Gender Picklist Values for Relationships

This article contains these sections:

- Gender Picklist Values Overview
- Enable Translation Workbench
- Translate the Default Gender Custom Labels

**! IMPORTANT :** *This article describes advanced options for customizing NPSP Relationships. Please be careful when using these options, because improper configuration can cause unexpected side-effects in your Relationships records.*

## Gender Picklist Values Overview

By default, NPSP Relationships use the Male and Female gender values to determine Reciprocal Relationships according to your Reciprocal Relationships Settings (<https://powerofus.force.com/articles/Resource/NPSP-Manage-Relationships-Settings#!#reciprocal>).

However, if you want to use gender values other than Male and Female, or add additional values, you'll need to use a native Salesforce tool called Translation Workbench to edit these values.

Simply editing the Gender picklist field is not sufficient if you want to change the default values and still have NPSP use gendered reciprocal relationships. For example, if you wanted to change the default gender values from Male to Male-Identifying and Female to Female-Identifying, just editing the picklist values in the Gender field without following the rest of the steps outlined in this document would cause NPSP to generate gender-neutral reciprocal Relationships, such as Sibling rather than Brother or Sister, or Sibling's Child rather than Niece or Nephew.

The rest of this document shows you how you can both change NPSP's default gender values, and still maintain gendered reciprocal relationships.

## Enable Translation Workbench

Your first step is enabling Translation Workbench in Salesforce. Translation Workbench is a tool that, yes, lets you translate text in Salesforce into other languages, but the tool also lets you change and customize text within the same language in managed packages such as NPSP.

1. From Setup, enter Translation Workbench in the Quick Find box, then select Translation Settings under the Translation Workbench menu.
2. Click the **Enable** button.

You should see English in the list of Supported Languages, and it should be Activated. If it's not Activated, click the Edit button and Activate it. If you don't see English listed at all, you'll need to do this:

1. Click the **Add** button.
2. Select English as the Language.
3. Make sure Active is selected.
4. Under Identify Translators for This Language, select your name and click **Add** to move your name to the Selected List.
5. Click **Save** when you're finished.

## Translate the Default Gender Custom Labels

Now customize the labels:

1. From Setup, enter Custom Labels in the Quick Find box, then select Custom Labels under the Create menu.
2. Click the letter **M** to narrow down the list of Custom Labels.
3. Click **Male**.

Salesforce1 Quick Start

View: All Create New View

Force.com Home

Administrator

- Manage Users
- Manage Apps
- Manage Territories
- Company Profile
- Security Controls
- Domain Management
- Communication Templates
- Translation Workbench
- Data Management
- Mobile Administration
- Desktop Administration
- Lightning for Outlook
- Lightning Sync
- Email Administration
- Google Apps
- Data.com Administration

Build

- Customize
- Create
  - Apps
  - Custom Labels
  - Objects
  - Picklists BETA
  - Package

New Custom Label

Action	Name	Categories	Short Description	Value	Language
	Male	Relationships	Male	Male	English
	ManageHousehold		Manage Household	Manage Household	English
	Matching_Donation_Record_Suffix		Suffix added to the name of the original donation to form matching donation name	{3} Matching Donation {1}	English
	Matching_Donation_Record_Type		Record type for matching donation. Set to \$Source to match the original donation	\$Source	English
	mtchBtnSearch	Find Matched Gifts	mtchBtnSearch	Search	English
	mtchCloseDateEnd	Find Matched Gifts	mtchCloseDateEnd	Close Date End	English
	mtchCloseDateStart	Find Matched Gifts	mtchCloseDateStart	Close Date Start	English
	mtchFindMatchedGiftsSectionHeader	Find Matched Gifts	mtchFindMatchedGiftsSectionHeader	Find Matched Gifts	English
	mtchFindMoreGifts	Find Matched Gifts	mtchFindMoreGifts	Find More Gifts	English
	mtchFindMoreGiftsInfo	Find Matched Gifts	mtchFindMoreGiftsInfo	Fill in one or more filters, and then click on Search.	English
	mtchItems	Find Matching Gifts, Manage Soft Credits	mtchItems	{0} items	English
	mtchSearchCriteriaEmpty	Find Matching Gifts	mtchSearchCriteriaEmpty	Please specify one or more filters in order to search.	English
	mtchSelectCbTitle	Find Matched Gifts	mtchSelectCbTitle	Select	English
	mtchTotalMatchingGift	Find Matched Gifts	mtchTotalMatchingGift	Total Matching Gift	English
	mtchTotalSelected	Find Matched Gifts	mtchTotalSelected	Total Selected	English
	mtchTotalUnaccounted	Find Matched Gifts	mtchTotalUnaccounted	Total Unaccounted	English

Show me fewer records per list page

#### 4. Click on the **New Local Translations/Overrides** button

Quick Find / Search...

Expand All | Collapse All

Lightning Experience

Salesforce1 Quick Start

Force.com Home

Administrator

- Manage Users
- Manage Apps
- Manage Territories
- Company Profile
- Security Controls
- Domain Management
- Communication Templates
- Translation Workbench
- Data Management
- Mobile Administration
- Desktop Administration

Custom Label

Male (Managed)

Back to List: Custom Labels

This Custom Label is managed, meaning that you may only edit certain attributes. [Display More Information](#)

Local Translations / Overrides [0] | Packaged Translations [1]

Custom Label Detail

Short Description	Male	Name	Male
Language	English		
Namespace Prefix	npe4		
Installed Package	Relationships		
Categories	Relationships		
Value	Male		
Created By	Jennifer Thall, 9/11/2016 9:49 PM	Modified By	Jennifer Thall, 9/11/2016

Local Translations / Overrides

New Local Translations / Overrides

These translations were created by administrators in your company. [New Local Translations / Overrides](#) ones.

No records to display

#### 5. Select **English** as the language

#### 6. In the **Translation Text** box, enter whatever term(s) you want to use for the Male category. You can also provide a comma-delimited list. Some examples may include: Male-identifying, Transgender, or Nonbinary.

## New Translation

Translation Edit

SaveCancel

Master Label Information

Master Label	Male	Master Label Language	English
Master Label Text	Male		

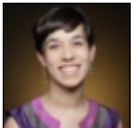
Translation Information

Language	English	
Translation Text	Male-Identifying	

SaveCancel

- Click **Save** when complete.
- Repeat this process for the Female Custom Label if necessary.

Lastly, make sure that the Gender picklist field on the Contact object also includes the values you added via Translation. (See [Add or Edit Picklist Values \(https://help.salesforce.com/apex/HTViewHelpDoc?id=updating\\_picklists.htm\)](https://help.salesforce.com/apex/HTViewHelpDoc?id=updating_picklists.htm) in Salesforce Help and Training.) Once that's done, the NPSP can use your custom Gender values to auto-create reciprocal Relationships as defined in the Male/Female/Neutral table in Relationship Reciprocal Settings.



([http://creativecommons.org/licenses/by-](http://creativecommons.org/licenses/by-nc-sa/3.0/deed.en_US)

[nc-sa/3.0/deed.en\\_US](http://creativecommons.org/licenses/by-nc-sa/3.0/deed.en_US))

This work is licensed under a Creative Commons

([/\\_ui/core/userprofile/UserProfilePage?u=00580000006xeQuAA1](http://creativecommons.org/licenses/by-nc-sa/3.0/deed.en_US)) Attribution-NonCommercial-ShareAlike 3.0 Unported

([/\\_ui/core/userprofile/UserProfilePage?u=00580000006xeQuAA1](http://creativecommons.org/licenses/by-nc-sa/3.0/deed.en_US)) license ([http://creativecommons.org/licenses/by-nc-](http://creativecommons.org/licenses/by-nc-sa/3.0/deed.en_US)

Heller Consulting

[sa/3.0/deed.en\\_US](http://creativecommons.org/licenses/by-nc-sa/3.0/deed.en_US)).



(/)



